

1.4.1. SMITH BERGER - TOWING EQUIPMENT

More than any of our other products, tow pin/stern roller assemblies are designed specifically for the vessels and operating requirements of our customers. By incorporating standard component parts proven through years of service into a frame designed specifically for your vessel, we are able to configure an economical unit that will provide years of trouble free use. Our deck mounted units will conform with the shape of the bulwarks and also match the sheer of the deck. We also provide units that are installed flush with the deck. Optional Hold Down Hooks retain the wire in heavy seas.

We are able to provide an array of combinations to meet your requirements: from (2) to (5) pins, hold down hooks or hold down caps, hydraulic or pneumatic operation, and integrated stern rollers from 12" to 36" in diameter. Please utilize the data sheets below as a guide. We may have a previously designed unit that will suit your application. Many times minor revisions can be made to conform to your vessel.

[Air Operated Tow Pins](#)

Manufactured to the same standards as our hydraulic tow pins, our air operated tow pins use the existing air supply on the vessel.-

[Stern Rollers](#)

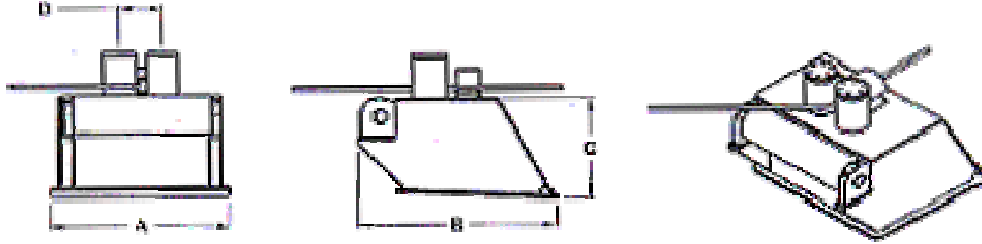
With a variety of dimensions and lengths, our Stern Rollers will withstand the harsh environments and working conditions found offshore.

[Shark Jaws](#)

The Newest Addition to our product line!

Combine Smith Berger Shark Jaws with our Tow Pins and Stern Rollers for a winning combination on your Anchor Handling Tug Supply Vessel

TOW PINS BULWARK MOUNTED - 2 PINS



Standard Features

- Custom engineered for your vessel
- Remote operating controls
- Pins raised and lowered individually by marine grade hydraulic cylinders with stainless steel rods
- Hose assemblies with stainless steel fittings
- Tow Pin Rollers are made from induction hardened alloy steel and have grease lubricated bronze bearings
- Stern rollers are made from heavy wall steel tubing and have grease lubricated Nylatron bearings
- Dedicated hydraulic power units w/operating controls
- Three coat marine paint system

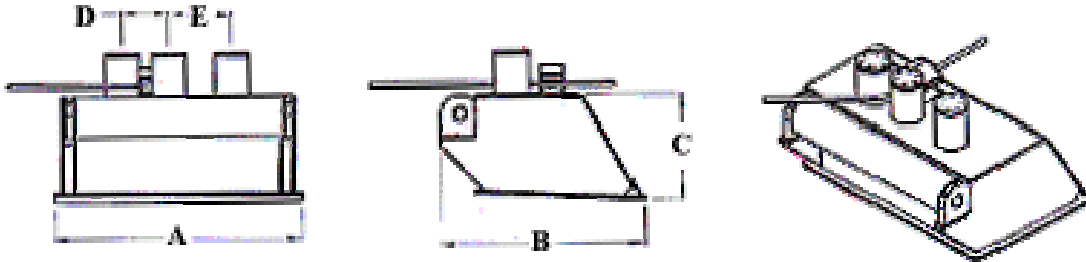
Optional Features

- Hold Down Hooks made from heavy duty heat treated steel castings and are raised and lowered individually by marine grade hydraulic cylinders with stainless steel rods
- Pneumatic power units

Model No.	Max Wire Size	Pin Dia	Pin Height	Roller Dia	(All measurements in inches unless otherwise noted)				
					A	B w/Hook	B w/o Hook	C	D
9T214	1 3/4	9	12	14	48 1/2	66	54	33 1/2	13
12T224	2 1/4	12	12	24	52	81	69	37 1/2	16
16T230	2 3/4	16	16	30	62	91	79	42	20

Model No.	Max Wire Size	Pin Dia	Pin Height	Roller Dia	(All measurements in MM unless otherwise noted)				
					A	B w/Hook	B w/o Hook	C	D
9T214	44	229	305	356	1232	1676	1372	851	330
12T224	57	305	305	610	1321	2057	1753	953	406
16T230	70	406	406	762	1575	2311	2007	1067	508

TOW PINS BULWARK MOUNTED - 3 PINS



Standard Features

- Custom engineered for your vessel
- Remote operating controls
- Pins raised and lowered individually by marine grade hydraulic cylinders with stainless steel rods
- Hose assemblies with stainless steel fittings
- Tow Pin Rollers are made from induction hardened alloy steel and have grease lubricated bronze bearings
- Stern rollers are made from heavy wall steel tubing and have grease lubricated Nylatron bearings
- Dedicated hydraulic power units w/operating controls
- Three coat marine paint system

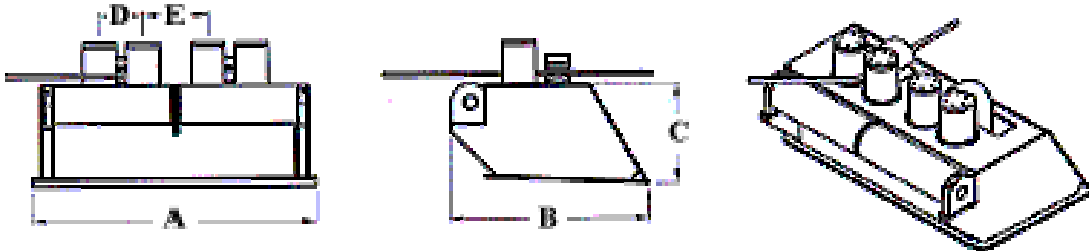
Optional Features

- Hold Down Hooks made from heavy duty heat treated steel castings and are raised and lowered individually by marine grade hydraulic cylinders with stainless steel rods
- Pneumatic power units

Model No.	Max Wire Size	Pin Dia	Pin Height	Roller Dia	(All measurements in inches unless otherwise noted)					
					A	B w/Hook	B w/o Hook	C	D	E
9T314	1 3/4	9	12	14	64	66	54	33 1/2	13	19
12T324	2 1/4	12	12	24	72	81	69	37 1/2	16	22
16T330	2 3/4	16	16	30	88	91	79	42	20	26

Model No.	Max Wire Size	Pin Dia	Pin Height	Roller Dia	(All measurements in MM unless otherwise noted)					
					A	B w/Hook	B w/o Hook	C	D	E
9T314	44	229	305	356	1626	1676	1372	851	330	483
12T324	57	305	305	610	1829	2057	1753	953	406	559
16T330	70	406	406	762	2235	2311	2007	1067	508	660

TOW PINS BULWARK MOUNTED - 4 PINS



Standard Features

- Custom engineered for your vessel
- Remote operating controls
- Pins raised and lowered individually by marine grade hydraulic cylinders with stainless steel rods
- Hose assemblies with stainless steel fittings
- Tow Pin Rollers are made from induction hardened alloy steel and have grease lubricated bronze bearings
- Stern rollers are made from heavy wall steel tubing and have grease lubricated Nylatron bearings
- Dedicated hydraulic power units w/operating controls
- Three coat marine paint system

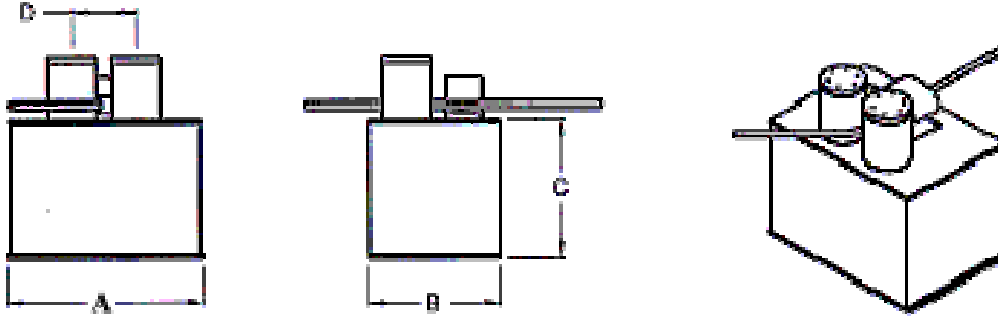
Optional Features

- Hold Down Hooks made from heavy duty heat treated steel castings and are raised and lowered individually by marine grade hydraulic cylinders with stainless steel rods
- Pneumatic power units

Model No.	Max Wire Size	Pin Dia	Pin Height	Roller Dia	(All measurements in inches unless otherwise noted)					
					A	B w/Hook	B w/o Hook	C	D	E
9T414	1 3/4	9	12	14	80	66	54	33 1/2	13	19
12T424	2 1/4	12	12	24	90	81	69	37 1/2	16	22
16T430	2 3/4	16	16	30	108	91	79	42	20	26

Model No.	Max Wire Size	Pin Dia	Pin Height	Roller Dia	(All measurements in MM unless otherwise noted)					
					A	B w/Hook	B w/o Hook	C	D	E
9T414	44	229	305	356	2032	1676	1372	851	330	483
12T424	57	305	305	610	2286	2057	1753	953	406	559
16T430	70	406	406	762	2743	2311	2007	1067	508	660

TOW PINS FLUSH MOUNTED - 2 PINS



Standard Features

- Custom engineered for your vessel
- Remote operating controls
- Pins raised and lowered individually by marine grade hydraulic cylinders with stainless steel rods
- Hose assemblies with stainless steel fittings
- Tow Pin Rollers are made from induction hardened alloy steel and have grease lubricated bronze bearings
- Stern rollers are made from heavy wall steel tubing and have grease lubricated Nylatron bearings
- Dedicated hydraulic power units w/operating controls
- Three coat marine paint system

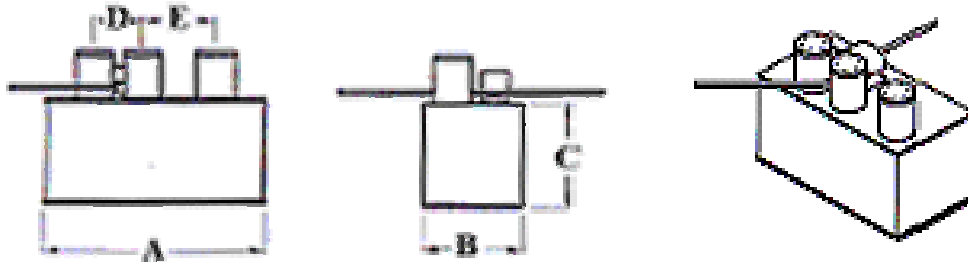
Optional Features

- Hold Down Hooks made from heavy duty heat treated steel castings and are raised and lowered individually by marine grade hydraulic cylinders with stainless steel rods
- Pneumatic power units

Model No.	Max Wire Size	Pin Dia	Pin Height	(All measurements in inches unless otherwise noted)				
				A	B w/Hook	B w/o Hook	C	D
9T2X12	1 3/4	9	12	44 1/2	28	16	33	13
12T2X12	2 1/4	12	12	52	33	21	37 1/2	16
16T2X16	2 3/4	16	16	60	38	26	42	20

Model No.	Max Wire Size	Pin Dia	Pin Height	(All measurements in MM unless otherwise noted)				
				A	B w/Hook	B w/o Hook	C	D
9T2X12	44	229	305	1130	711	406	838	330
12T2X12	57	305	305	1321	838	533	953	406
16T2X16	70	406	406	1524	965	660	1067	508

TOW PINS FLUSH MOUNTED - 3 PINS



Standard Features

- Custom engineered for your vessel
- Remote operating controls
- Pins raised and lowered individually by marine grade hydraulic cylinders with stainless steel rods
- Hose assemblies with stainless steel fittings
- Tow Pin Rollers are made from induction hardened alloy steel and have grease lubricated bronze bearings
- Stern rollers are made from heavy wall steel tubing and have grease lubricated Nylatron bearings
- Dedicated hydraulic power units w/operating controls
- Three coat marine paint system

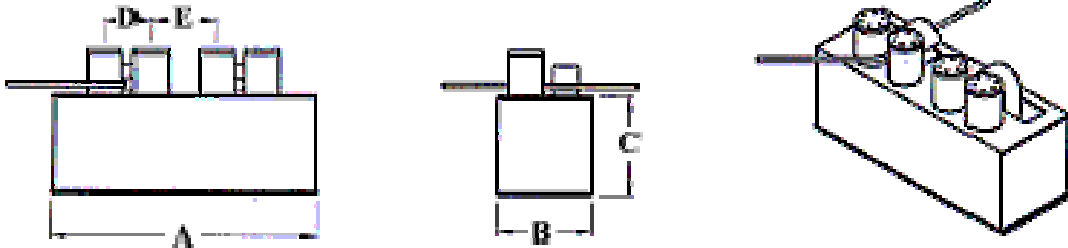
Optional Features

- Hold Down Hooks made from heavy duty heat treated steel castings and are raised and lowered individually by marine grade hydraulic cylinders with stainless steel rods
- Pneumatic power units

Model No.	Max Wire Size	Pin Dia	Pin Height	(All measurements in inches unless otherwise noted)					
				A	B w/Hook	B w/o Hook	C	D	E
9T3X12	1 3/4	9	12	60	28	16	33	13	19
12T3X12	2 1/4	12	12	72	33	21	37 1/2	16	22
16T3X16	2 3/4	16	16	86	38	26	42	20	26

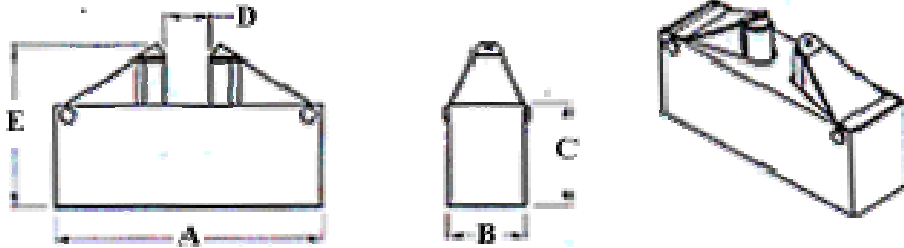
Model No.	Max Wire Size	Pin Dia	Pin Height	(All measurements in MM unless otherwise noted)					
				A	B w/Hook	B w/o Hook	C	D	E
9T3X12	44	229	305	1524	711	406	838	330	483
12T3X12	57	305	305	1829	838	533	953	406	559
16T3X16	70	406	406	2184	965	660	1067	508	660

TOW PINS FLUSH MOUNTED - 4 PINS



Standard Features	Model No.	Max Wire Size	Pin Dia	Pin Height	(All measurements in inches unless otherwise noted)					
					A	B w/Hook	B w/o Hook	C	D	E
					<ul style="list-style-type: none"> ● Custom engineered for your vessel ● Remote operating controls ● Pins raised and lowered individually by marine grade hydraulic cylinders with stainless steel rods ● Hose assemblies with stainless steel fittings ● Tow Pin Rollers are made from induction hardened alloy steel and have grease lubricated bronze bearings ● Stern rollers are made from heavy wall steel tubing and have grease lubricated Nylatron bearings ● Dedicated hydraulic power units w/operating controls ● Three coat marine paint system 	9T4X12	1 3/4	9	12	76
<ul style="list-style-type: none"> ● Hold Down Hooks made from heavy duty heat treated steel castings and are raised and lowered individually by marine grade hydraulic cylinders with stainless steel rods ● Pneumatic power units 	12T4X12	2 1/4	12	12	90	33	21	37 1/2	16	28 1/2
	16T4X16	2 3/4	16	16	106	38	26	42	20	26
	Model No.	Max Wire Size	Pin Dia	Pin Height	(All measurements in MM unless otherwise noted)					
					A	B w/Hook	B w/o Hook	C	D	E
	9T4X12	44	229	305	1930	711	406	838	330	483
	12T4X12	57	305	305	2286	838	533	953	406	724
	16T4X16	70	406	406	2692	965	660	1067	508	660

AIR OPERATED TOW PINS



Standard Features

- Custom engineered for your vessel
- Designed for breaking strength of wire with 45° wrap on tow pin roller
- Available in bulwark or flush mounted styles
- Tow pins raised/lowered with pneumatic actuators
- Grease lubricated bronze bearings
- Economical installation and set up

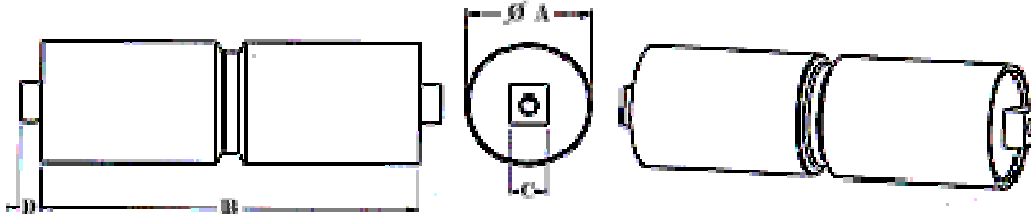
Optional Features

- Custom sizes
- Integral steel rollers
- Paint to your specification
- Third party certification

Model No.	Max Wire Size	Pin Dia	Pin Height	(All measurements in inches unless otherwise noted)				
				A	B	C	D	E
8T214-A	2	8	14	88	27 1/2	34	14 1/2	54
12T216-A	2 1/4	12	16	96	33	34	14 1/2	56

Model No.	Max Wire Size	Pin Dia	Pin Height	(All measurements in MM unless otherwise noted)				
				A	B	C	D	E
8T214-A	51	203	356	2235	699	864	3681	372
12T216-A	57	305	406	2438	838	864	368	1422

STERN ROLLERS



Standard Features

- Designed for breaking strength of wire with 90° wrap on roller
- Mounting blocks designed for installation into the structure of the vessel
- Heavy wall construction
- Grease lubricated Nylatron bearings
- Interior stiffeners for added strength

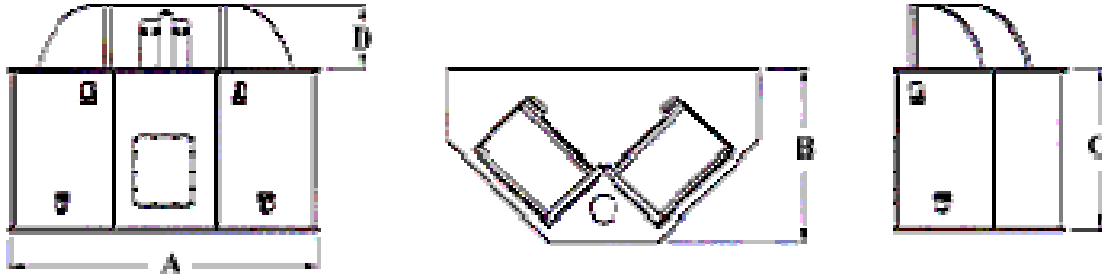
Optional Features

- Custom sizes and lengths
- Grooved rollers
- Waisted rollers
- Paint to your specification
- Third party certification

Model No.	Maximum Wire Size	(All measurements in inches unless otherwise noted)			
		A	B	C	D
2' x 8'	1 1/2	24	96	13	3
3' x 6'	1 3/4	36	72	16 1/2	5
4' x 12'	2	48	144	15	8 1/4
5' x 8'	2 1/2	60	96	20	11

Model No.	Maximum Wire Size	(All measurements in MM unless otherwise noted)			
		A	B	C	D
2' x 8'	38	610	2438	330	76
3' x 6'	44	914	1829	419	127
4' x 12'	51	1219	3658	381	210
5' x 8'	64	1524	2438	508	279

SHARK JAWS



Standard Features

- Raised and lowered using heavy duty marine grade hydraulic cylinders
- Remotely controlled operations
- Flush with deck when not in operation
- When jaws are raised, there is no load on the hydraulic cylinders.
- EMERGENCY RELEASE system with the push of a button

Optional Features

- Replaceable jaw inserts for different chain sizes
- Third party certification

Model	Max Chain Size	Max Wire Size	(All measurements in inches unless otherwise noted)				Weight (lbs)
			A	B	C	D	
200 Ton	3 1/2	3 1/2	73	40	37	16	5400
350 Ton	4 1/2	4 3/4	88	50	47	19	9000
500 Ton	5 3/4	6	112	60	59	24 1/2	16,000
750 Ton	7	7	140	75	74	30 1/2	28,500