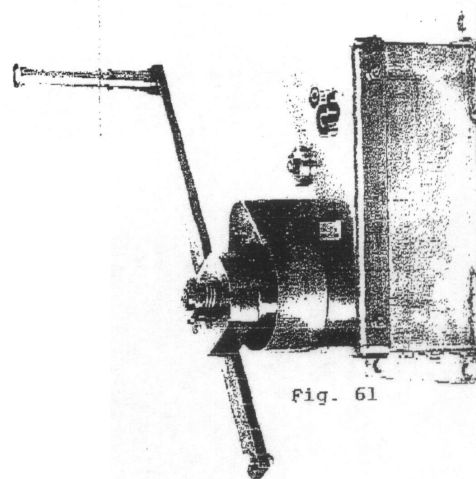
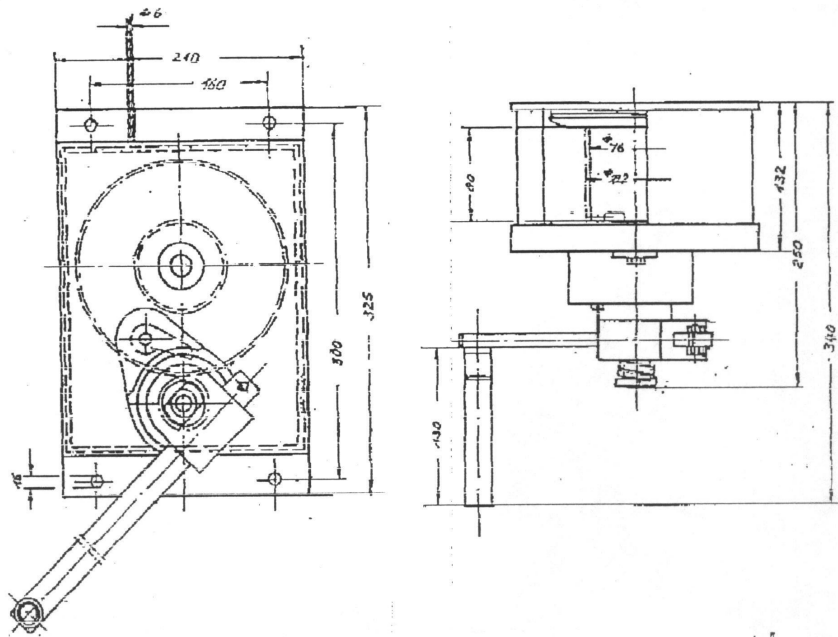
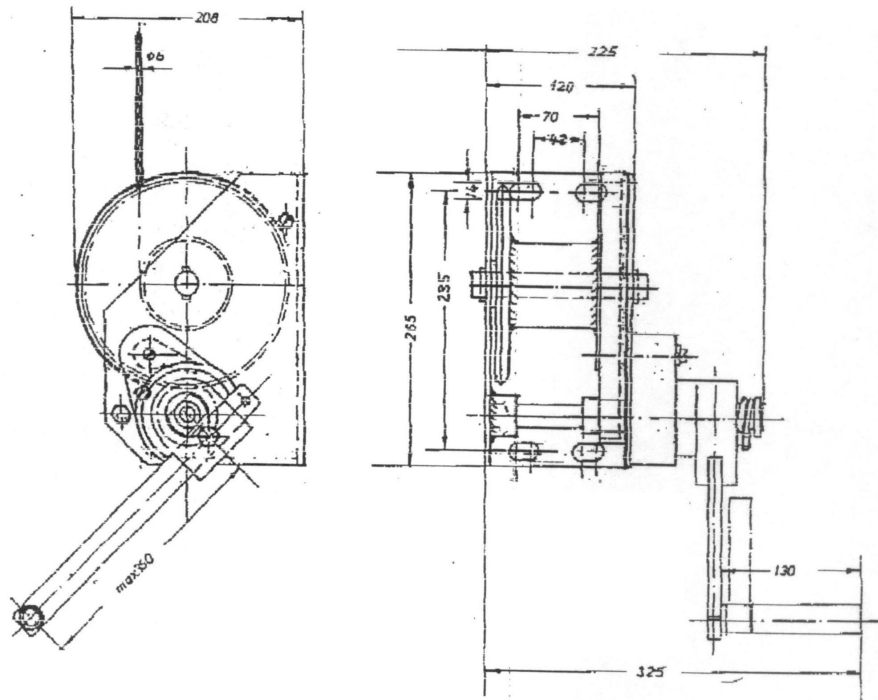
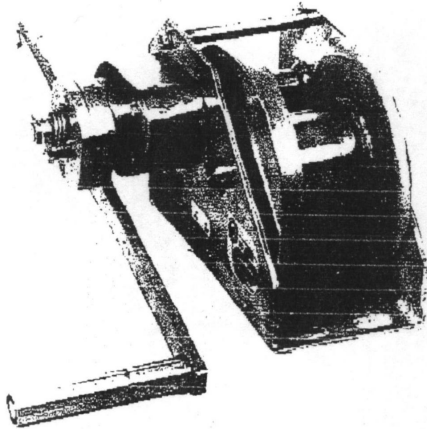


## 5.1. STAINLESS STEEL WALL-WINCH



Model	: fig. 61
Load pull	: 500 kg. on the 1st layer
Wire storage	: 15 mtr. - Ø 6 mm. - in 4 layers
Stroke per swing	: 64 mm in the 1e layers
Swing pressure	: 15 daN (under full load)
Execution	: <ul style="list-style-type: none"> <li>• Material is stainless steel</li> <li>• According to the rules by UVV VBG 8</li> <li>• Maintenance free</li> <li>• With load-brake</li> <li>• Crank is adjustable and removable at the grip</li> </ul>

## 5.2. STAINLESS STEEL WALL-WINCH



Model	: fig. 62
Load pull	: 500 kg. on the 1st layer
Wire storage	: 15 mtr. - Ø 6 mm. - in 4 layers
Stroke per swing	: 64 mm in the 1e layers
Swing pressure execution	: 15 daN (under full load)
	: <ul style="list-style-type: none"> <li>• Material is stainless steel</li> <li>• According to the rules by UVV VBG 8</li> <li>• Maintenance free</li> <li>• With load-brake</li> <li>• Crank is adjustable and removable at the grip</li> </ul>

