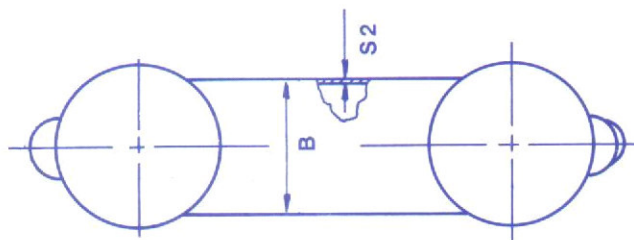
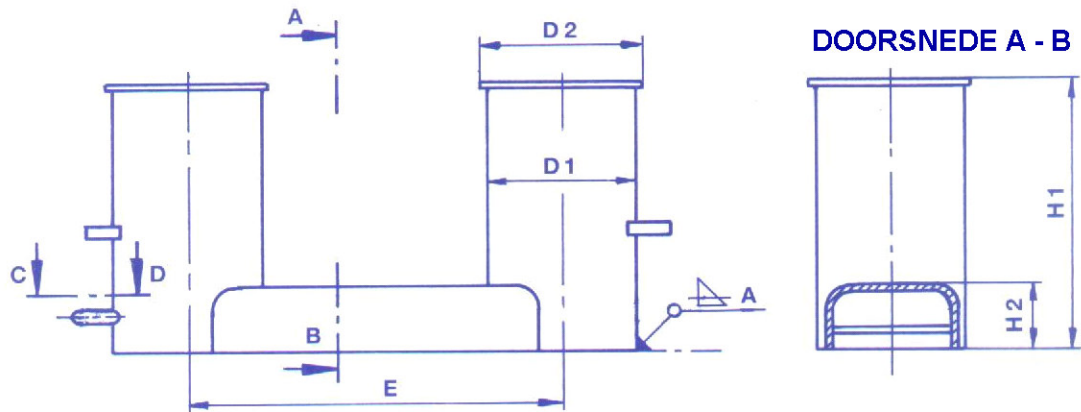
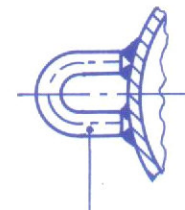


4.1. DUBBELE BOLDERS DIN 82607

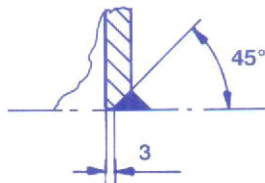


DOORSNEDE C - D



STOPPEROOG

BEVESTIGING TYPE 20 + 32



Ontworpen voor: 1 draad

Montage: vrij aan dek

Omkastng: gelaste constructie

TYPE	GESCHATTE TREKKRACHT	BUIS D 1	B	D2	E	H1	H2	S2	A	GEWICHT
D 1	10 kN	139.7 x 6.3	130	160	430	370	105	5	4	20.6 kg.
D 2	20 kN	219.1 x 8.0	180	242	570	475	115	6	4	52.3 kg.
D 3	32 kN	273.0 x 10.0	250	300	700	570	135	8	5	99.5 kg.
D 5	50 kN	323.9 x 10.0	300	355	880	670	150	8	6	145.4 kg.
D 8	80 kN	355.6 x 14.2	330	390	1050	780	175	10	8	259.4 kg.
D 12	120 kN	457.0 x 16.0	420	490	1200	860	195	16	12	437.0 kg.
D 20	200 kN	508.0 x 17.5	470	545	1350	970	230	16	-	571.0 kg.
D 32	320 kN	559.0 x 20.0	530	600	1400	1000	270	16	-	830.0 kg.

Afmetingen in mm, wijzigingen in de afmetingen kunnen voorkomen